

GERMANICA

40CM PEDESTAL WI-FI FAN KF18GDC



INSTRUCTION MANUAL

Please read this manual carefully before using, and keep it for future reference.

CONTENTS

General Safety	4
Before first use	6
Product Overview	
Pedestal Fan	7
Control Panel	8
Remote Control	8
Getting Started	
Remote Control	9
Fan Parts	10
Assembling the Fan	11
Modes	12
Swing / Timer	12
App / Wi-Fi Control	13
Add to Google Home App	18
Add to Amazon Alexa App	18
FAQs	19
Specifications	20
Customer Support	20

GENERAL SAFETY

Read this manual thoroughly before you start using the Fan.

Store this manual, the completed warranty card, your receipt and the product packaging.

The safety precautions instructions reduces the risk of fire, electric shock and injury when correctly complied to.

Please follow all instructions and take notice of all warnings.

IMPORTANT INFORMATION

- Do not expose this product to rain or moisture as it may result in fire.
 - Do not temper or change or modify the product in any way.
 - Only use Accessories outlined and recommended by the manufacturer.
 - Please do not expose the product to splashing or water contact
-
- The apparatus shall not be exposed to dripping or splashing and no objects filled with liquids, such as vases, shall be placed on the product. Dry location use only.
 - No naked flame source, such as candles, should be placed on the product.
 - Do not operate the fan while power cord is coiled up, please completely unwind the power cord before using.
 - Do not allow power cord to hang over edge of table or bench.
 - Never move the fan by the power cord.
 - Move the power cord away from pathways of persons so they do not trip.
 - Do not run power cord under carpeting or cover it with rugs. Must have quick access to unplug the fan.
 - Do not use this fan with an extension cord, power adaptors or external timers.
 - This product is not designed for commercial, industrial or outdoor use.
 - Do not leave the fan unattended during use. Always switch off and unplug.
 - Children must be supervised at all times while in use. This fan is not a toy. Make sure children do not go near or attempt to play with this fan.
 - **AIRFLOW** - Make sure nothing is obstructing or blocking the airflow outlet at the front of the fan, and the airflow intake which is the back of the fan.
 - Do not insert an foreign objects into the fan grill opening as this may cause damage to the appliance and lead to electric shock and/or a fire hazard.

GENERAL SAFETY (CONT.)

- If you notice any unusual odors or smoke around the unit, immediately disconnect the unit from the outlet and contact the service center. Failure to do so may result in fire or electric shock.
- When not using the unit for long periods of time or when you are moving the unit. Please disconnect the product from main power.
- Please beware that Dust could accumulate over time on the unit and cause it to generate heat and or deteriorate insulation, which in turn may result in an electrical fire.
- The product is not intended for use by persons (including children) with reduced physical, sensory or mental capabilities, or young children of any age, They must be supervised product by a person responsible for their safety.
- To maintain the product do not use any chemical or cleaning agent or wet cloth, please only ensure to utilize a dry cloth to wipe it down from marks or dust and only after unplugging the product from the power socket.
- Please ensure to contact our call center for any repair or service required for the products.

Please make sure upon positioning this product, the place is:

- Not wet or damp and Well ventilated.
- Placed on a stable surface to avoid product from tipping over.
- Away from direct sunlight or heaters.
- Away from splashes or food.
- Protected from excessive dust or grease.
- Do not place this equipment in a confined space such as a bookcase or similar unit. Allow 20cm above and 5cm spacing on both sides for proper ventilation.
- Do not place the Product near heat sources such as radiators, stoves or other audio visual equipment that produce heat.
- Do not place small metallic objects near the unit.
- Do not use or store flammable or combustible materials near the unit. Doing so may result in fire or explosion. Do not place any naked flame sources, such as lit candles, cigarettes or incense sticks on top of the product.

GENERAL SAFETY (CONT.)

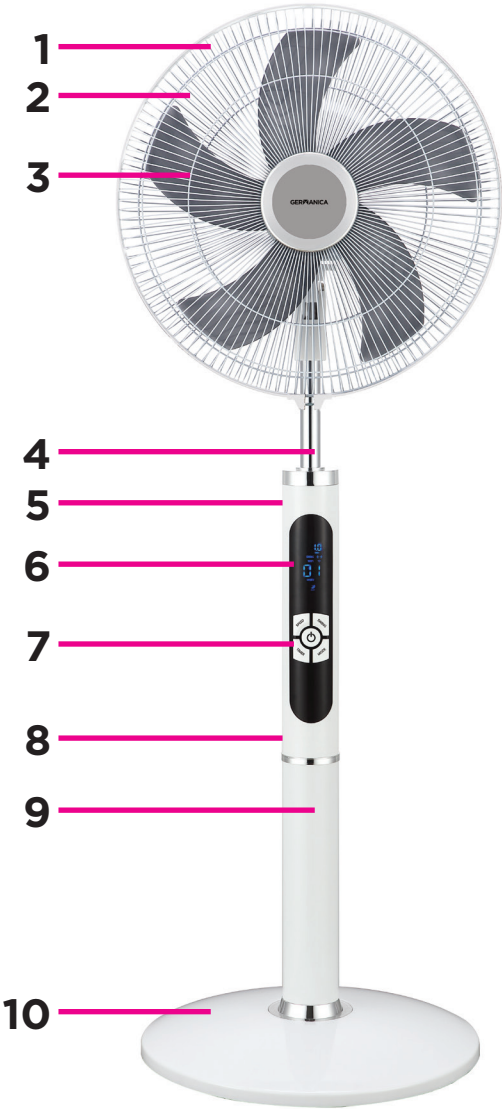
Before first use

- Unpack the fan and accessories and ensure all parts of the product are undamaged and in good working order.
- Plastic wrapping can be a suffocation hazard for babies and young children, so ensure all packaging materials are out of their reach and disposed of safely.
- Unwind the power cord to its full length and inspect it for damage before each use. Do not use the product if it or its cord has been damaged or is not working properly. In case of damage, contact our after sales support line for advice on examination, repair or return of the damaged product.
- Ensure the fan is not exposed to direct sunlight or placed near a heater or other heat source.
- Placed on a flat and dry surface.
- Do not place in areas of high humidity such as bathrooms, laundry area, near a sink, washer or pool (any source of water).

PRODUCT OVERVIEW

1 of 3 Pedestal Fan

- 1. Guard Ring
- 2. Front / Rear Grilles
- 3. Fan Blade
- 4. Extension Pole
- 5. Height Adjustment Knob
(back of product)
- 6. LED Display
- 7. Control Panel
- 8. DC Socket
(back of product)
- 9. Base Tube
- 10. Base
- 11. Remote Control
- 12. AC Adaptor



12

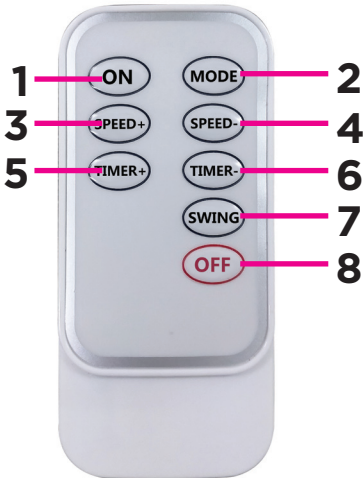


11

PRODUCT OVERVIEW (Cont.)

2 of 3 Control Panel

- 1. Control Panel
- 2. Speed Button
- 3. Power Button
- 4. Timer Button
- 5. Swing Button
- 6. Mode Button



3 of 3 Remote Control

- 1. On Button
- 2. Mode Button
- 3. Speed + Button
- 4. Speed - Button
- 5. Timer + Button
- 6. Timer - Button
- 7. Swing Button
- 8. Off Button

Getting Started

Remote Control

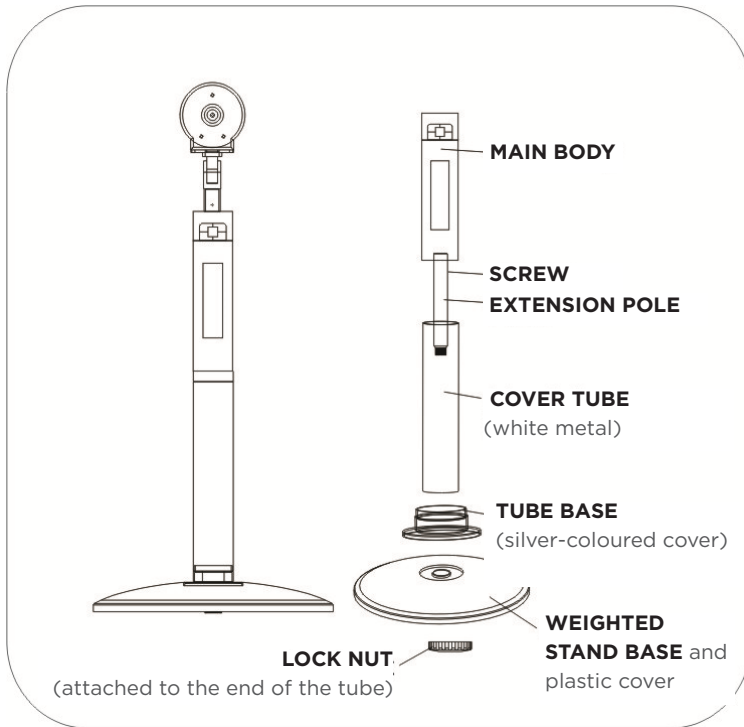
- The fan comes with a remote control, which is powered by two AAA batteries (not supplied). Removing battery cover by sliding the cover outwards with your thumb. Insert new AAA batteries into the compartment and make sure they are placed correctly following the polarity symbols (+ / -) and place battery cover back on.
- Do not mix new batteries with old while first setting up remote control or replacing batteries.
- If you are not using fan or remote control for long period of time, remove the batteries from the battery compartment to avoid leakage.

WARNING - ELECTRIC SHOCK HAZARD.

Do not plug in the power supply into electrical outlet and turn on the power until the fan is completely 100% assembled. Please follow the instructions on the pages following.

Getting Started (Cont.)

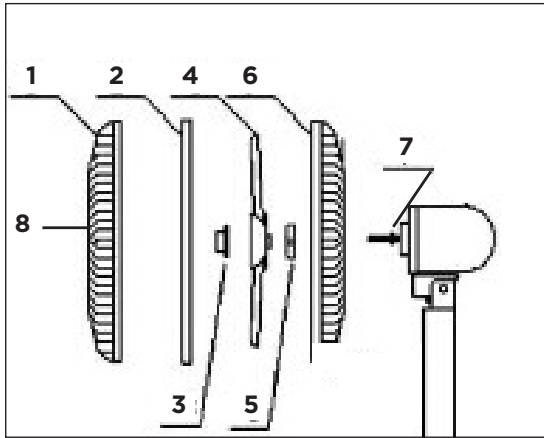
Assembling the Fan



NOTE - use the illustration of above while following instructions.

1. Loosen the screw from the tube and connect the tube with the main body, then fasten the screw.
2. Assemble the main body into the cover tube and connect the two pieces.
3. Remove the lock nut from the tube. Turn the base parts over, place the silver-coloured cover on top, then place the base parts over the tube. Fix the fan body to the base using the lock nut at the bottom side of the base, tighten it.
4. Tighten the height adjustment screw at a desired height for the fan head.

Getting Started (Cont.)



1. Front Guard
2. Guard Ring
3. Blade Cap
4. Blade
5. Guard Nut
6. Rear Guard
7. Motor Shaft
8. Front Plate

NOTE - use the illustration of above while following instructions.

1. The motor shaft has the blade cap and guard nut attached. Remove the cap turning it clockwise. Then remove the nut by turning it anticlockwise.
2. Place the rear guard on the front of the motor housing, lining up the two positioning knobs on the front of the motor housing with the holes in the rear guard. Push the guard in until the two knobs come through the holes. Secure the rear guard by reattaching the guard nut and turning it clockwise to tighten.
3. Slide the blade onto the motor shaft, making sure to match the protrusions on the shaft with the slots in the blade. Tighten the blade with the blade cap, turning it anticlockwise to tighten it.
4. Test the fan by rotates correctly by rotating the blade with your hands, making sure that there is no contact with the nut. The fan blade should rotate freely.
5. If the front plate is covered with a plastic film, remove the film.
6. The front and rear guard are held together with a guard ring, which has two grooves, one for each of the guards. Loosen slightly the large screw at the bottom of the ring and make sure the edge of the guard sits in the appropriate groove, all around the rear guard. Then fit the front guard against the rear guard and make sure that the edge sits correctly in the other groove. Re-tighten the screw to hold the guards together.

Getting Started (Cont.)

MODES

Press the mode button on remote control to change the fan breeze modes.

- Normal -** The fan operates at a constant speed (fan icon indicator)
- Natural -** Simulates a natural breeze by cycling on and off. (palm tree icon indicator)
- Sleep -** Simulates soft and natural breeze suitable for night time. (half moon icon indicator)

Selecting Fan Speed

Press the **SPEED** + or - buttons to adjust the fan speeds. This fan has 15 different levels of speed.

SWING (OSCILLATION)

Press the swing button on remote control or control panel to turn on oscillation mode which will swing left to right.
Press button again to turn off.

TIMER

Press the Timer button on remote control or control panel) to set the timer in increments of 30 minutes (half-hour) to a maximum of 10 hours.

APP / Wi-Fi Control

Working with your mobile device, using your home Wi-Fi network router to communicate with the portable air conditioner and control it.

Controlling the portable air conditioner remotely is very easy.

You will need:

- Android smartphone or tablet, or an Apple iPhone or iPad
- Internet connection at your home
- Wi-Fi network router set up at home.

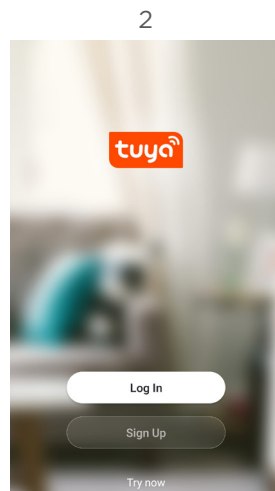
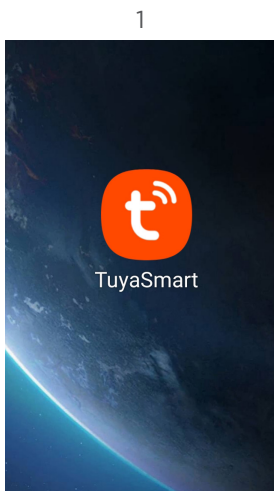
You must also have the **Tuya Smart** App installed or updated on your smartphone or mobile device. This app is available from Google Play Store or Apple App Store.

Initial set-up

Upon completing setup of your portable air conditioner, or when you have changed your mobile device or wireless router, you will have to set up the communication between the devices.

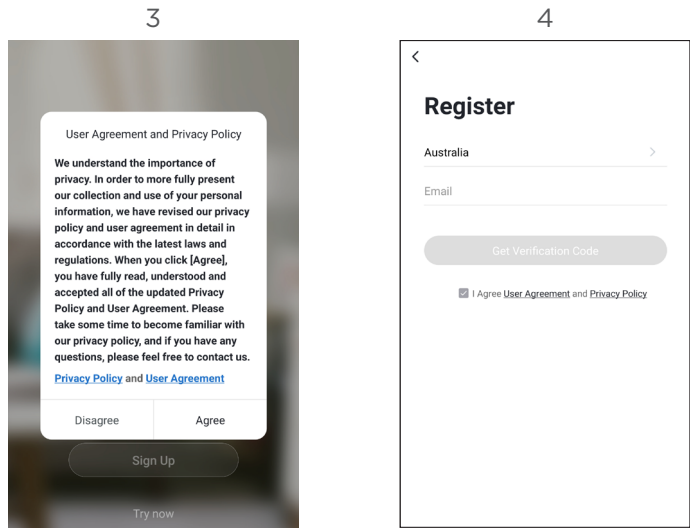
In order to do this, make sure you have the **Tuya Smart** App installed or updated on your mobile device, your Wi-Fi router is switched on and your mobile device connected to your home Wi-Fi network.

On your mobile device, tap on the **Tuya Smart** app (1). It will open and take you to the Login Page (2).



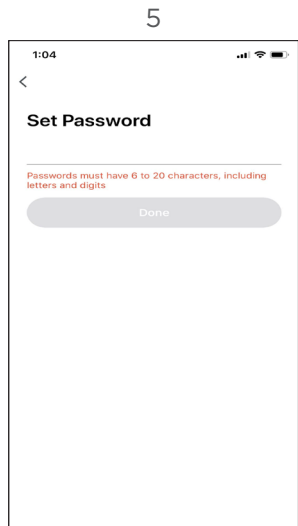
APP / Wi-Fi Control (Cont.)

Before you log in, please press **REGISTER** and register your account using an email address. (3 and 4)



Once entered email address, tap **GET VERIFICATION CODE** and an email will be sent your email address with a verification code. Enter this code.

Now you can enter a password for your account. Please remember this password or write it down. (5)



APP / Wi-Fi Control (Cont.)

IMPORTANT

Before you can control your fan remotely, you must reset the Wi-Fi module. **To do so please follow instructions:**

1. Unplug the fan from the power outlet for 10 seconds.
2. On the control panel, press and hold SWING for 5 seconds to reset.

When the Wi-Fi Indicator on the control is blinking rapidly, the Fan is now ready to configure with your smart device.



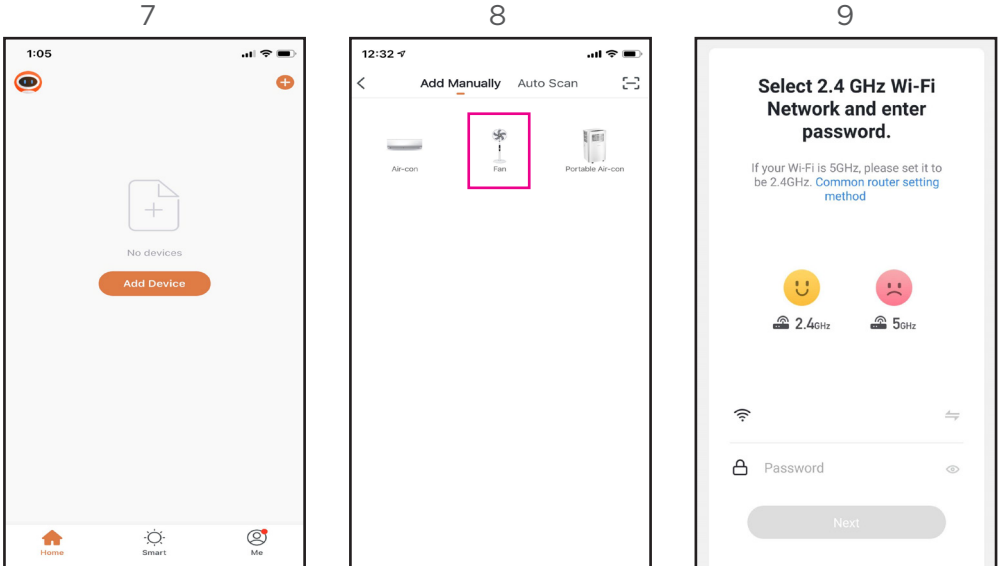
APP / Wi-Fi Control (Cont.)

You will now enter device list.

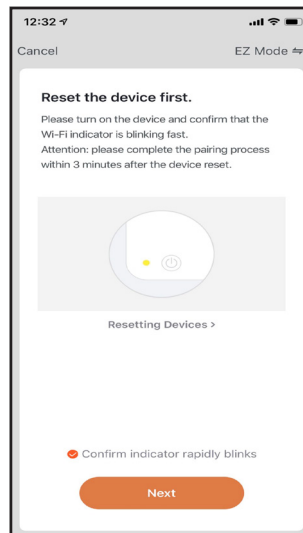
1. Tap the plus (+) or **ADD DEVICE** to add your device. (7).
2. Select the type of product which in this case is: FAN. (8)
3. Select Wi-Fi network then enter in the password to connect. (9)

Note: Make sure to select 2.4GHz **NOT** a 5GHz Wi-Fi network.

5GHz Wi-Fi Network will not work with this app.

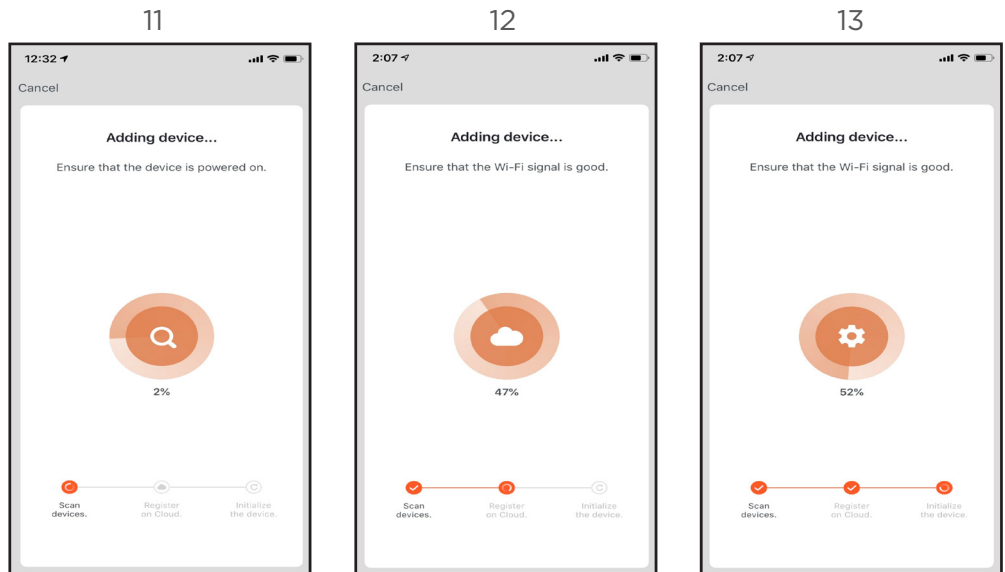


Now that you have already reset the Wi-Fi module on page 15 and the Wi-Fi indicator is blinking fast. your device will now be ready to connect to your smartphone as to the image to the right (10).

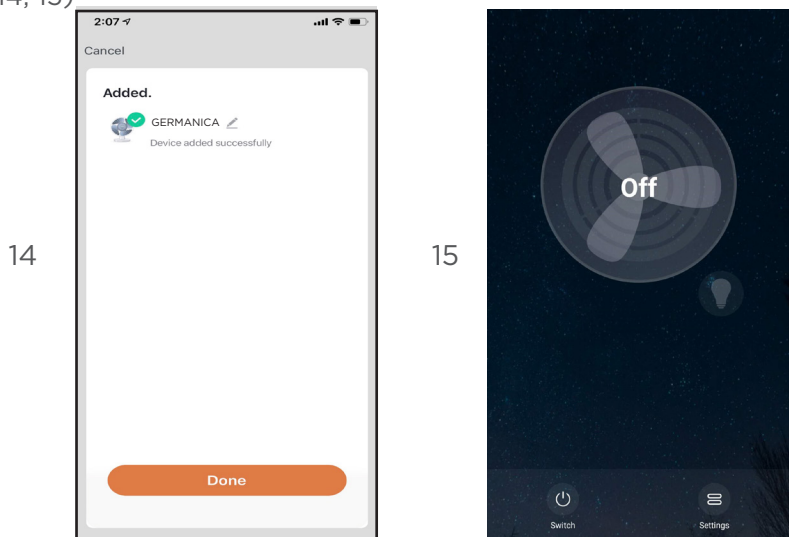


APP / Wi-Fi Control (Cont.)

Now that the device is being added, progress screen will now appear as to below: (11, 12, 13).



Once completed, it will show your product is now added. click **DONE**. Click on the device name and you can now start navigating the controls of the app. (14, 15)



APP / Wi-Fi Control (Cont.)

Add the Tuya Smart app to your Google Home app.

1. Open your Google home app.
(Before you link your app to your Google Home app, you will have to have a Google Home account already set up.
2. From the home screen of the Google Home App, press **ADD**. Press **SET UP DEVICE**, then select **HAVE SOMETHING ALREADY SET UP?** under the **WORKS WITH GOOGLE** banner.
3. Search for Tuya Smart.
4. Press the **Tuya Smart** app and enter your **Tuya Smart** app account details and password.
Then press **SIGN IN**.

Add the Tuya Smart app to your Amazon Alexa Account.

You must have to already have an Amazon Alexa account set up.

1. Home screen of Amazon Alexa app, press the **3 bars** in the top left hand corner. **Select SKILLS & GAMES**, then search for **Tuya Smart**.
2. Select the **Tuya Smart** app, Ensure you have followed the steps listed, then select **CONFIRMED** and then select **NEXT**. Enter your **Tuya Smart** account details and password then press **SIGN IN**.

* Instructions for adding **Tuya Smart** app are general instructions only. Detailed steps or specific message from your Google Home or Amazon Alexa account may vary depending on the version.

Smartphone and Wi-Fi specification requirements

Minimum smartphone specifications


Android 5.0 version or later

IOS 9.0 version or later

FAQs

Problem	Possible cause and solution
During the set-up, the fan cannot be configured successfully.	Check that you have internet reception and your smart device and the fan are connected to the same Wi-Fi network.
	Make sure your Wi-Fi password is correct.
	Make sure that no firewalls or other restrictions are set.
	Make sure that the router works normally.
	Ensure that the fan, router and smart device are all on the same Wi-Fi network and within the signal range.
I cannot control the fan with my app.	If a message is displayed to alert you to an identification failure, the fan has been reset and the smart device lost control permission. You need to reconnect the phone to the fan, following the set-up instructions in this manual.
	If after these steps you still cannot control the fan with your smart device, please delete the fan from your device list and reconnect again.
My app cannot find the fan.	If a message is displayed to alert you that the device is offline, please check and ensure that your fan is connected to your mains supply and power is switched on at the outlet.
	Also ensure that your router is connected to the mains supply and that the router and your mobile phone are properly connected to your Wi-Fi network.

SPECIFICATIONS

Power	220-240V ~ 50/60Hz 45W
Remote control	2 x AAA batteries (not included)
AC adaptor specifications	
Input	100-240V~ 50-60Hz 1A
Output	24V  1.5A, 36VA max.
Protection class	II



CUSTOMER HELPLINE:

info@ayonz.com

DISTRIBUTED BY:

Ayonz Pty Ltd