

GERANICA

SMART WI-FI BLADELESS FAN GBF35W



INSTRUCTION MANUAL

Please read this manual carefully before using, and keep it for future reference.

CONTENTS

| | |
|---------------------------------|-----------|
| General Safety | 4 |
| Before first use | 6 |
| Filter Installation/Replacement | 7 |
| Product Overview | 8 |
| Getting Started | 9 |
| App / Wi-Fi Control | 11 |
| Register and Login | 12 |
| Connecting Process | 13 |
| Dashboard for Product Control | 16 |
| Add to Google Home App | 17 |
| Add to Amazon Alexa App | 17 |
| FAQs | 18 |
| Specifcations | Last Page |
| Customer Support | Last Page |

GENERAL SAFETY

Read this manual thoroughly before you start using the Bladeless Fan.

Store this manual, the completed warranty card, your receipt and the product packaging.

The safety precautions instructions reduces the risk of fire, electric shock and injury when correctly complied to.

Please follow all instructions and take notice of all warnings.

IMPORTANT INFORMATION

- Do not expose this product to rain or moisture as it may result in fire.
 - Do not temper or change or modify the product in any way.
 - Only use Accessories outlined and recommended by the manufacturer.
 - Please do not expose the product to splashing or water contact
-
- The apparatus shall not be exposed to dripping or splashing and no objects filled with liquids, such as vases, shall be placed on the product. Dry location use only.
 - No naked flame source, such as candles, should be placed on the product.
 - Do not operate the fan while power cord is coiled up, please completely unwind the power cord before using.
 - Do not allow power cord to hang over edge of table or bench.
 - Never move the fan by the power cord.
 - Move the power cord away from pathways of persons so they do not trip.
 - Do not run power cord under carpeting or cover it with rugs. Must have quick access to unplug the fan.
 - Do not use this fan with an extension cord, power adaptors or external timers.
 - This product is not designed for commercial, industrial or outdoor use.
 - Do not leave the fan unattended during use. Always switch off and unplug.
 - Children must be supervised at all times while in use. This fan is not a toy. Make sure children do not go near or attempt to play with this fan.
 - **AIRFLOW** - Make sure nothing is obstructing or blocking the airflow outlet at the front of the fan, and the airflow intake which is the back of the fan.
 - Do not insert an foreign objects into the fan grill opening as this may cause damage to the appliance and lead to electric shock and/or a fire hazard.

GENERAL SAFETY (CONT.)

- If you notice any unusual odors or smoke around the unit, immediately disconnect the unit from the outlet and contact the service center. Failure to do so may result in fire or electric shock.
- When not using the unit for long periods of time or when you are moving the unit. Please disconnect the product from main power.
- Please beware that Dust could accumulate over time on the unit and cause it to generate heat and or deteriorate insulation, which in turn may result in an electrical fire.
- The product is not intended for use by persons (including children) with reduced physical, sensory or mental capabilities, or young children of any age, They must be supervised product by a person responsible for their safety.
- To maintain the product do not use any chemical or cleaning agent or wet cloth, please only ensure to utilize a dry cloth to wipe it down from marks or dust and only after unplugging the product from the power socket.
- Please ensure to contact our call center for any repair or service required for the products.

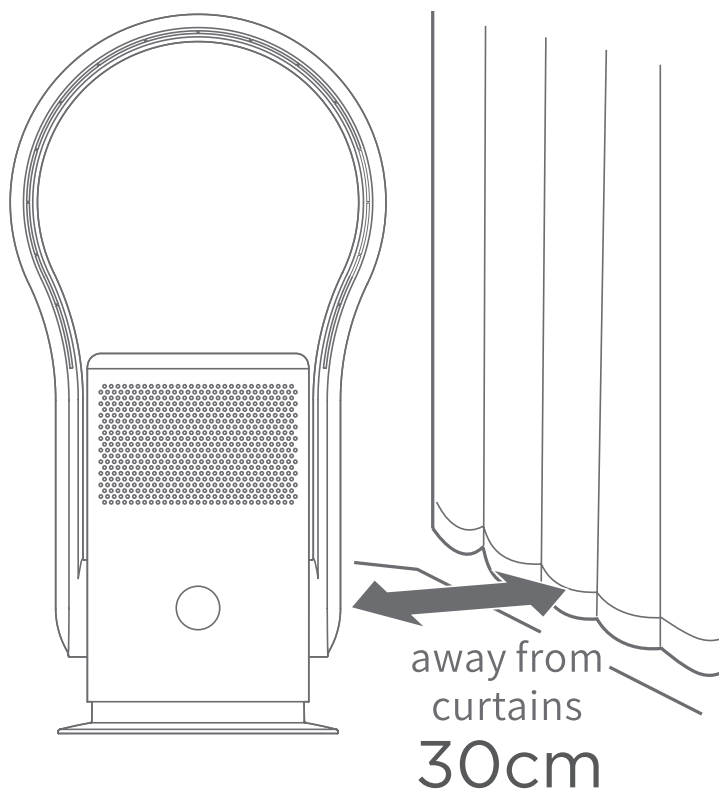
Please make sure upon positioning this product, the place is:

- Not wet or damp and Well ventilated.
- Placed on a stable surface to avoid product from tipping over.
- Away from direct sunlight or heaters.
- Away from splashes or food.
- Protected from excessive dust or grease.
- Do not place this equipment in a confined space such as a bookcase or similar unit. Allow 20cm above and 5cm spacing on both sides for proper ventilation.
- Do not place the Product near heat sources such as radiators, stoves or other audio visual equipment that produce heat.
- Do not place small metallic objects near the unit.
- Do not use or store flammable or combustible materials near the unit. Doing so may result in fire or explosion. Do not place any naked flame sources, such as lit candles, cigarettes or incense sticks on top of the product.

GENERAL SAFETY (CONT.)

Before first use

- Unpack the fan and accessories and ensure all parts of the product are undamaged and in good working order.
- Plastic wrapping can be a suffocation hazard for babies and young children, so ensure all packaging materials are out of their reach and disposed of safely.
- Unwind the power cord to its full length and inspect it for damage before each use. Do not use the product if it or its cord has been damaged or is not working properly. In case of damage, contact our after sales support line for advice on examination, repair or return of the damaged product.
- Ensure the fan is not exposed to direct sunlight or placed near a heater or other heat source.
- Placed on a flat and dry surface.
- Do not place in areas of high humidity such as bathrooms, laundry area, near a sink, washer or pool (any source of water).

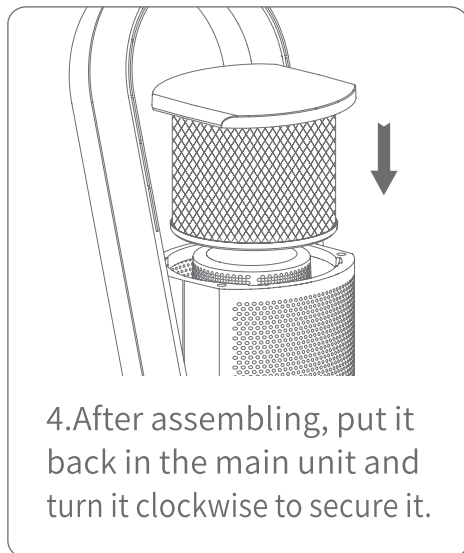
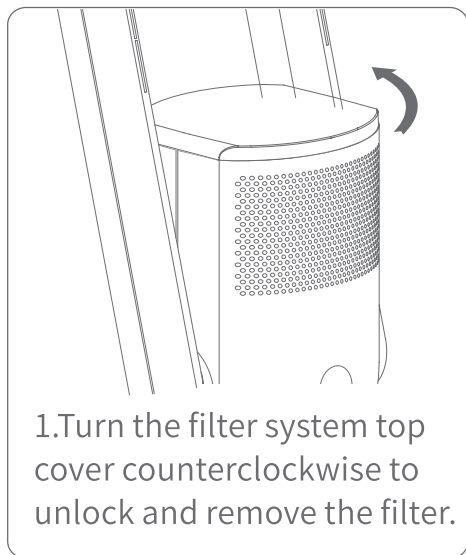


FILTER INSTALLATION/REPLACEMENT

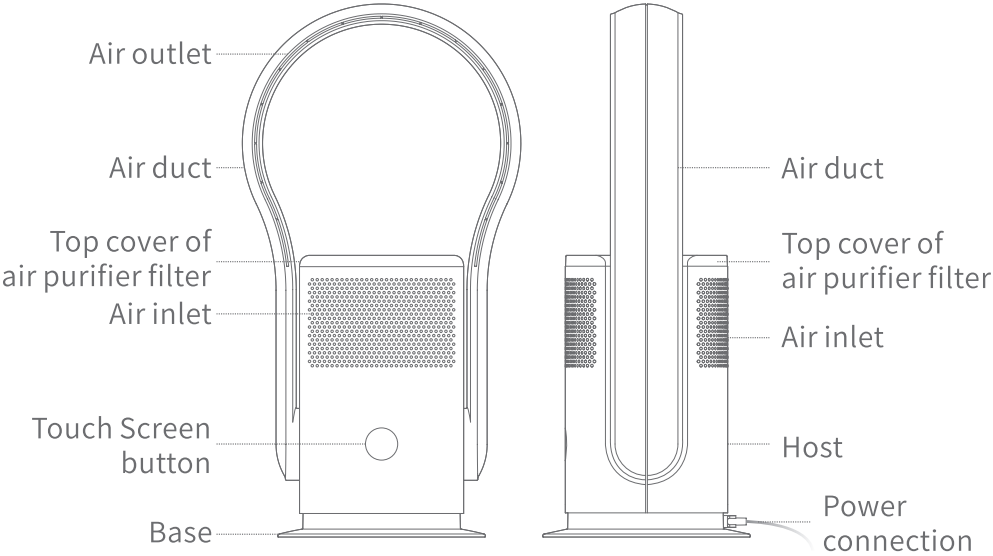
This machine is equipped with an air cleaning filter.

Before using the fan, the filter should be installed in the fan so that the air can be cleaned.

Installation and replacement method of air cleaning filter:



PRODUCT OVERVIEW



POWER

Turn the fan on and off.



MAX MODE

Maximum power
Strong airflow.



QUIET MODE

Soft and smooth
airflow.



SWING

Start and stop
swing



INCREASE AIRFLOW

Decrease Airflow
9 speed levels to
choose from.



SLEEP TIMER

1 to 8 hours of
timed shutdown.

Getting Started

Remote Control

- The fan comes with a remote control, which is powered by two AAA batteries (not supplied). Removing battery cover by sliding the cover outwards with your thumb. Insert new AAA batteries into the compartment and make sure they are placed correctly following the polarity symbols (+ / -) and place battery cover back on.
- Do not mix new batteries with old while first setting up remote control or replacing batteries.
- If you are not using fan or remote control for long period of time, remove the batteries from the battery compartment to avoid leakage.

Remote Control

1. Press down and hold the back remote compartment and slide it away from the remote to unlock the battery compartment.
2. Remove the cover and insert 2 x AAA batteries making sure the polarity symbols (+ / -) on the batteries match that of the remote control compartment.
3. Once batteries are inserted, close the battery compartment lid shut and click securely.



Getting Started (Cont.)

SWITCH ON AND OFF

Make sure you are connected to the power supply, the LED display lights up and the machine goes into standby mode.

Press the touch screen button, the buzzer will beep once and the bladeless fan will start.

Press and hold the touch screen button for 2 seconds, the buzzer will beep twice and the fan will stop running after you release your hand.

SPEED (FAN) SETTINGS

When bladeless fan is operating, Press the touch screen button on right side to adjust the speed setting. Speed setting air flow can be adjusted from 1 to 9.

OSCILLATION

When bladeless fan is in use, press and hold the touch screen button for 1 second. The buzzer will beep once and the fan will start to oscillate (left to right).

Press and hold the touch screen button on the unit again to stop the oscillation.

APP / Wi-Fi Control

Working with your mobile device, using your home Wi-Fi network router to communicate with the portable air conditioner and control it.

Controlling your Wi-Fi product remotely is very easy.

You will need:

- Android smartphone or tablet, or an Apple iPhone or iPad
- Internet connection at your home
- Wi-Fi network router set up at home.

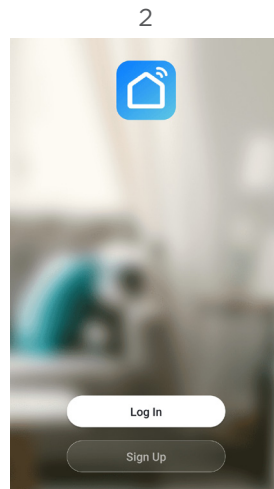
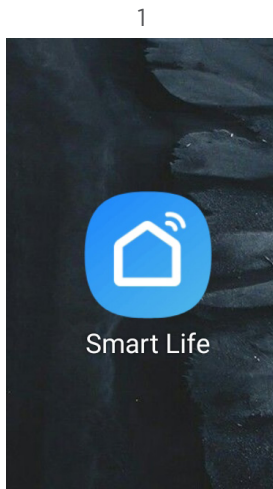
You must also have the **Smart Life** App installed or updated on your smartphone or mobile device. This app is available from Google Play Store or Apple App Store.

Initial set-up

Upon completing setup of your Wi-Fi product, or when you have changed your mobile device or wireless router, you will have to set up the communication between the devices.

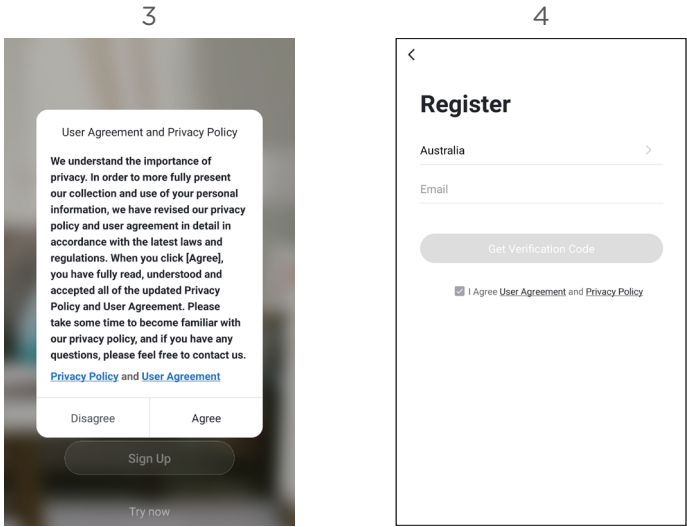
In order to do this, make sure you have the **Smart Life** App installed or updated on your mobile device, your Wi-Fi router is switched on and your mobile device connected to your home Wi-Fi network.

On your mobile device, tap on the **Smart Life** app (1). It will open and take you to the Login Page (2).



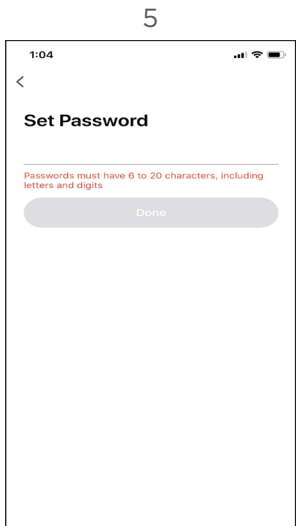
APP / Wi-Fi Control (Cont.)

Before you log in, please press **REGISTER** and register your account using an email address. (3 and 4)



Once entered email address, tap **GET VERIFICATION CODE** and an email will be sent your email address with a verification code. Enter this code.

Now you can enter a password for your account. Please remember this password or write it down. (5)



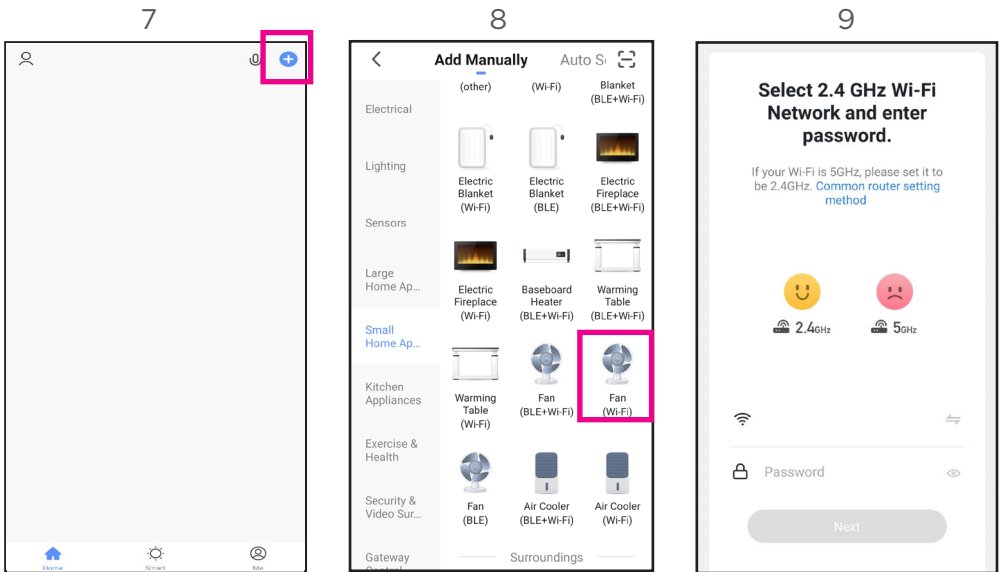
APP / Wi-Fi Control (Cont.)

1. Tap the plus (+) or **ADD DEVICE** to add your device. **(7)**.
2. Select the product which in this case is: **SMALL HOME APPLIANCES > FAN (WI-FI)**. **(8)**

3. Select Wi-Fi network then enter in the password to connect. **(9)**

Note: Make sure to select 2.4GHz - **DO NOT** select a 5GHz Wi-Fi network.

5GHz Wi-Fi Network will not work with this app.



THIS APP ONLY WORKS WITH 2.4 GHZ WIRELESS INTERNET CONNECTION.

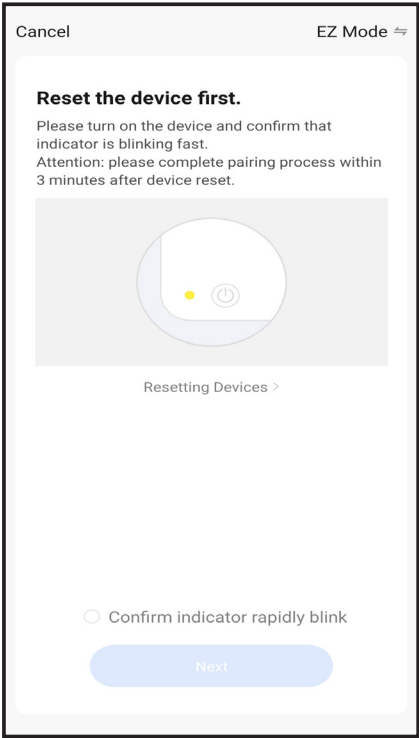
IF ATTEMPTING TO USE 5GHZ WIRELESS NETWORK YOUR PRODUCT WILL NOT BE DETECTED.

APP / Wi-Fi Control (Cont.)

IMPORTANT

Before you can control your Bladeless Fan remotely, you must reset the Wi-Fi module on the unit. **To do so please follow instructions:**

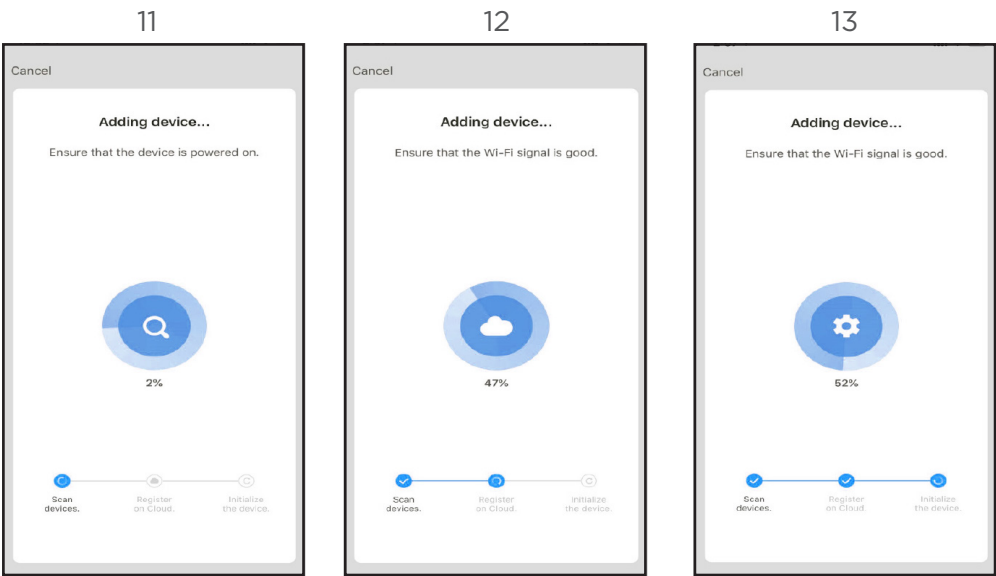
1. Press and hold touch screen display on the Bladeless Fan Unit for **5 seconds** to enter pairing mode (**F** will flash on the display).
2. When “**F**” is flashing on the touch screen display, you have set it in Wi-Fi mode, on the **SMART LIFE** app please follow shown below:
 - a. Tick the box that states “**Confirm Indicator Rapidly Blink**” so that you can then Press the **NEXT** button to enter the next screen. Please see below box you must tick: (10).



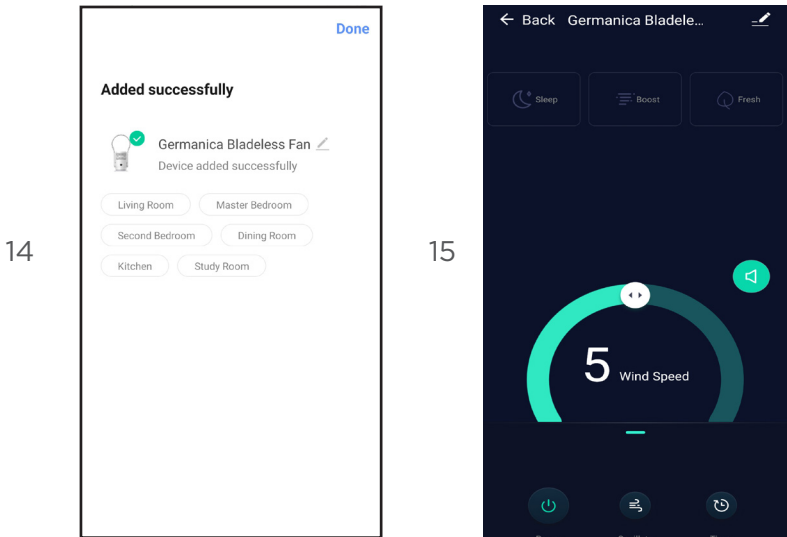
10

APP / Wi-Fi Control (Cont.)

Now that the device is being added, progress screen will now appear as to below: (11, 12, 13).

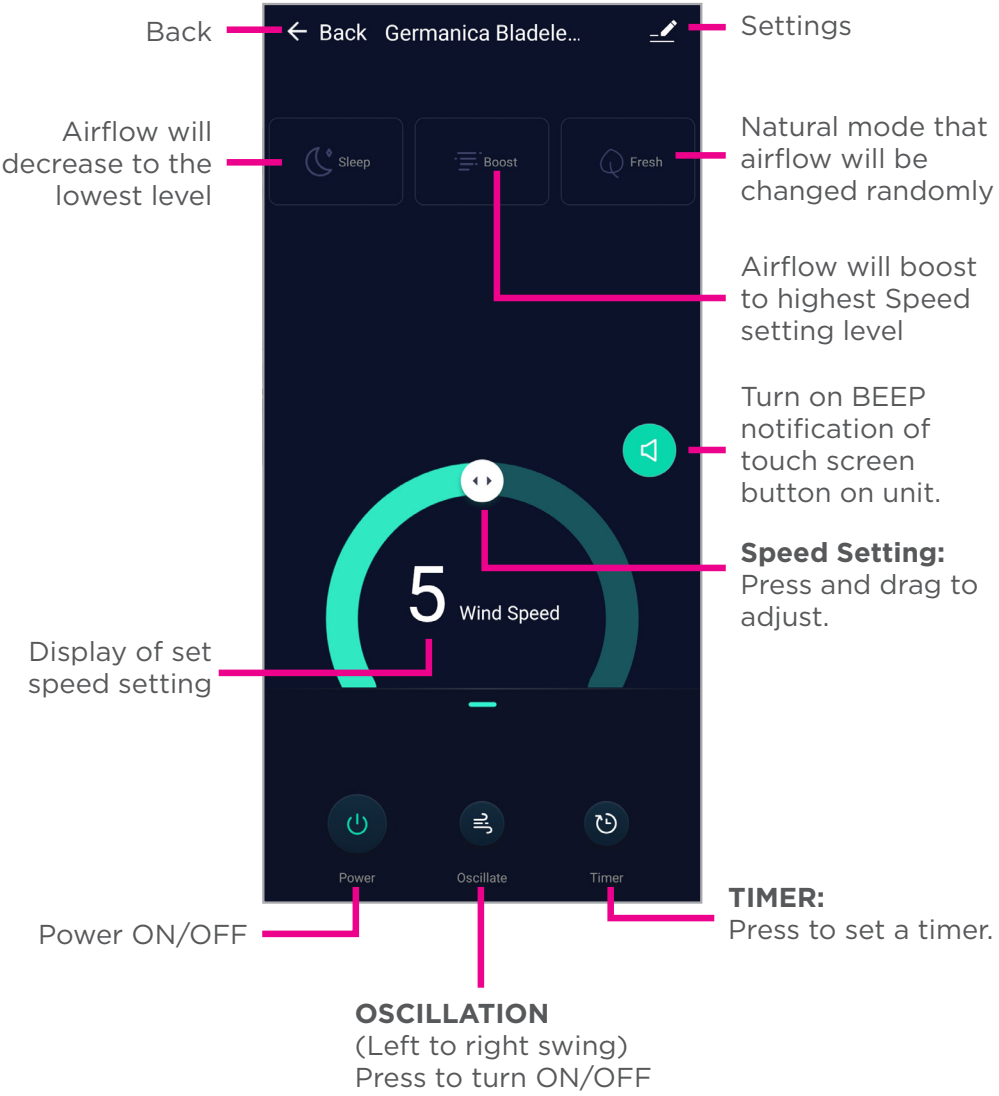


Once completed, it will show your product is now added. click **DONE**. Click on the device name and you can now start navigating the controls of the app. (14, 15)



APP / Wi-Fi Control (Cont.)

DASHBOARD FOR PRODUCT CONTROL



APP / Wi-Fi Control (Cont.)

Add the SMART LIFE app to your Google Home app.

1. Open your Google home app.
(Before you link your app to your Google Home app, you will have to have a Google Home account already set up.
2. From the home screen of the Google Home App, press **ADD**.
Press **SET UP DEVICE**, then select **HAVE SOMETHING ALREADY SET UP?** under the **WORKS WITH GOOGLE** banner.
3. Search for Smart Life.
4. Press the **Smart Life** app and enter your **Smart Life** app account details and password. Then press **SIGN IN**.

Add the Smart Life app to your Amazon Alexa Account.

You must have to already have an Amazon Alexa account set up.

1. Home screen of Amazon Alexa app, press the **3 bars** in the top left hand corner. **Select SKILLS & GAMES**, then search for **Smart Life**.
2. Select the **Smart Life** app, Ensure you have followed the steps listed, then select **CONFIRMED** and then select **NEXT**.
Enter your **Smart Life** account details and password then press **SIGN IN**.

* Instructions for adding **Smart Life** app are general instructions only. Detailed steps or specific message from your Google Home or Amazon Alexa account may vary depending on the version.

Smartphone and Wi-Fi specification requirements

Minimum smartphone specifications

Android 5.0 version or later

IOS 9.0 version or later

FAQs

| Problem | Possible cause and solution |
|---------------------------------------------------------------|-----------------------------------------------------------------------------------------------------------------------------------------------------------------------------------------------------------------------------------------|
| During the set-up, the fan cannot be configured successfully. | Check that you have internet reception and your smart device and the fan are connected to the same Wi-Fi network. |
| | Make sure your Wi-Fi password is correct. |
| | Make sure that no firewalls or other restrictions are set. |
| | Make sure that the router works normally. |
| | Ensure that the fan, router and smart device are all on the same Wi-Fi network and within the signal range. |
| I cannot control the fan with my app. | If a message is displayed to alert you to an identification failure, the fan has been reset and the smart device lost control permission. You need to reconnect the phone to the fan, following the set-up instructions in this manual. |
| | If after these steps you still cannot control the fan with your smart device, please delete the fan from your device list and reconnect again. |
| My app cannot find the fan. | If a message is displayed to alert you that the device is offline, please check and ensure that your fan is connected to your mains supply and power is switched on at the outlet. |
| | Also ensure that your router is connected to the mains supply and that the router and your mobile phone are properly connected to your Wi-Fi network. |

This page has
been left blank
on purpose.

SPECIFICATIONS

| | |
|----------------|----------------------------------|
| Power | 24VDC 1.5A, 25W |
| Remote control | 2 x AAA batteries (not included) |



CUSTOMER HELPLINE:

info@ayonz.com

DISTRIBUTED BY:

Ayonz Pty Ltd